



A NEW OUTLOOK FOR YOUR CAREER

Surface Networks Lead

APS Level 6

JOB REFERENCE NUMBER	60014432
CLASSIFICATION	APS Level 6 (Technical Officer Level 4)
GROUP	Data & Digital
PROGRAM	Observing Systems & Operations
LOCATION	Observing Operations Hub Melbourne
STATUS	Ongoing
WORKING HOURS	Full time
SALARY RANGE	\$80,665 - \$91,713 plus an additional 15.4% superannuation
CLOSING DATE	11:30pm AEST/AEDT Sunday 8 th November 2020
APPLICANTS	Australian Citizenship – see Eligibility Requirements
CONDITIONS	Successful candidate will be required to hold a valid Australian driver's licence
CONTACT OFFICER	Ben Gillson Manager Observing Operations Hub Melbourne Phone: 0437 130 435 Email: OOHM.Manager@bom.gov.au



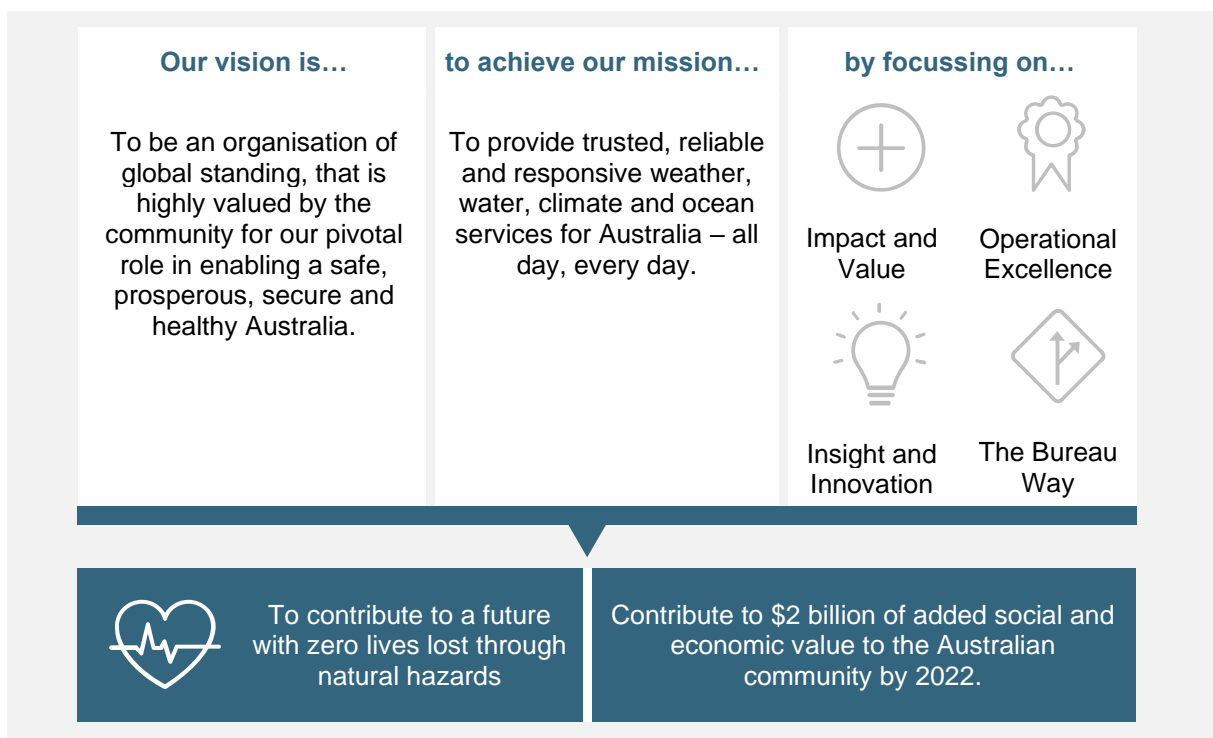
ABOUT US

The Bureau of Meteorology is one of the few organisations that touches the lives of all Australians and all Australia, every day. The Bureau works across Australia and remote islands, providing services from the Antarctic to beyond the equator, and from the Indian Ocean to the Pacific.

We are Australia's national weather, climate and water agency, in the Agriculture, Water and Environment portfolio of the Australian Government, operating under the authority of the Meteorology Act 1955 and the Water Act 2007. We provide data, information, knowledge, insight and wisdom to help Australians prepare and respond to the realities of their natural environment, including droughts, floods, fires, storms, tsunamis and tropical cyclones.

Our products and services include observations, forecasts, analysis and advice covering Australia's atmosphere, water, oceans and space environments. We undertake focussed scientific research in support of our operations and services. Through regular forecasts, warnings, monitoring and advice, we provide one of Australia's most fundamental and widely used public services.

We have strong relationships with our customers, partners and stakeholders in Australia, including the Australian Community and the emergency services sectors, all-levels of Government, and focus sectors including aviation, agriculture, energy and resources, national security and water.





WORKING AT THE BUREAU

The Bureau represents a dynamic and exciting opportunity. A role with the Bureau involves:

OUR WORK	OUR PEOPLE	OUR ENVIROMENT	OUR EXPIERENCE
Purpose-driven impactful work that brings real benefit to the Australian Community, businesses and industry.	A deeply passionate and highly skilled workforce that continuously challenges the status quo to achieve greater impact and experiences for our colleagues and customers.	A world class organisation with excellent workplaces in great locations, access to cutting-edge technology and a safe and inclusive environment for everyone.	A commitment to professional development and growth, backed by clear career pathways and training opportunities, and complimented by a competitive remuneration package.

POSITION OVERVIEW

On behalf of Manager National Observing Operations, applications are sought from candidates interested in role of Technical Officer Level 4 Surface Networks Lead at the Observing Operations Hub in Melbourne.

As the Technical Officer Level 4 Surface Networks Lead, you will be part of the Observing Operations Hub team in Melbourne undertaking a key role in the National Observing Operations Program in the Data and Digital Group.

All members of the Observing Operations Hub team in Melbourne undertake moderate to complex network support tasks such as coordination of resources for maintenance, inspections and return to service of sophisticated technologies, advanced system diagnostics and fault finding, technical administration and providing support to teams working in remote environments.

We are seeking a good, 'hands on', electronic technician with experience in maintaining, installing and repairing electronic and mechanical equipment situated in varying outdoor environments (including alpine, coastal, arid, fertile, suburban, regional and offshore areas). The successful applicant should possess sound knowledge of common environmental degradation on outdoor electronic systems, and an ability to fault find systemically using standard test equipment. They will also demonstrate a high-level strategic view of the network but possess the ability to operate at a technician level when required. Must be willing to travel regularly to remote parts of Victoria.

The successful applicant should have a strong customer focus and will be required to liaise with stakeholder groups on technical aspects of observing networks, review and contribute to working documentation, prepare and deliver reports and provide technical expertise on equipment and procedures where required.

The TO4 Surface Networks Lead role at the Observing Operations Hub in Melbourne will be directly responsible for leading activities associated with a range of observing networks and systems within the Melbourne Hub's geographic area of responsibility including:

- Operation, inspection, maintenance, performance verification and return to service (RTS) of equipment including, but not limited to:
 - Automatic Weather Station (AWS) network and associated sensors
 - Advanced sensors – Ceilometers, Vismeters, Auto Evaporation pans and Aviation Cameras
 - Asset database management



- Network Management, routine inspection and data validation of the AWS network, standalone TBRG network and other networks where assistance is requested
- Undertake Network Management with a strong focus on capturing and logically cataloguing scheduled maintenance and RTS records including drawings, photographs and performance records
- Site selections for Surface Observations and liaise with landowners for site access
- Monitoring and assessing data quality including recovery and correction of observations
- Plan for on-going infrastructure and sensor upgrades and provide documentation including business cases to support these requirements
- Training and support of Observing Operations Hub staff
- Maintain supplies of surface observation equipment and consumables
- Management and operation of communication systems within the Surface Observing network
- Operational management of staff where required

ROLE RESPONSIBILITIES

The responsibilities of the role include but are not limited to:

1. Program of Service Delivery

Ensure AWS network is maintained in accordance with the Bureau's internal Program of Service documentation. This will be achieved through recommendations of work force planning to the Hub Manager (prioritising sites to visit through considering staff availability & skills, seasonal changes impacting sites and customer data requirements), maintaining adequate spares and ensuring serviceability of calibration equipment.

2. Work Package Delivery

Assist the Hub Project Lead to plan and deliver outcomes from assigned work packages relating to the AWS network.

3. Network Operations and Analysis

Undertake and coordinate complex and/or specialist activities such as: perform advanced diagnostics and fault finding of equipment; the maintenance and return to service of specialised technologies such as automatic weather stations, Surface Observing equipment and network communication devices.

4. Network and Infrastructure Support

Manage and assist with remote site support activities including scheduling of visits, asset maintenance, service delivery, and operational program outputs. Other network support activities might include observing network design, network and asset auditing, site inspection, environmental management, and data quality management activities.

5. Site Selection and Design

Undertake site selection design, inspection and evaluation for operational equipment and systems. Document the meteorological exposure and maintain associated records (Inspections).

6. Management

Manage, supervise and develop staff in your line of responsibility. Prepare technical reports and documentation as directed. Undertake administrative tasks including data base management of operational and support systems and financial reconciliations.

7. Data Quality

Undertake data quality management tasks, monitor network outputs and take corrective actions as required.

8. Liaison and Representation

Liaise with various internal and external stakeholders at the appropriate level and represent the Bureau in a professional manner in accordance with Australian Public Service Values and Code of Conduct. Must demonstrate a strong customer focus.



9. Travel

Travel away from Melbourne by sea, road, or air to undertake the role of Technical Officer Level 4 (Surface Networks Lead) will be necessary. A current driver's licence will be required to undertake these activities.

10. Documentation & Record Keeping

Prepare and oversight the preparation of operational and technical maintenance reports, drawings and associated documentation, technical document management, planning, procurement and delivery.

11. Budgets

Support the Hub Manager in maintaining operational and project budgets, schedules and associated network expenditure as required.

12. Compliance

Comply with all relevant legislation, policies, procedures and guidance in the course of your work.

13. Diversity & Inclusion

Understand and promote the strategies, programs and plans of the various elements of the Bureau's Commitment to Diversity and Inclusion.

14. WHSE

Comply with all Bureau work, health, safety and environment policies and procedures, and take reasonable care for your own health and safety and that of your team members, other employees, contractors and visitors who may be affected by your conduct.

15. Other Relevant Duties

Undertake other relevant station, field and business duties as required.

SELECTION CRITERIA

The Bureau encourages applications from all suitably qualified candidates. Applications will be considered based on alignment with selection criteria, which have been matched to the APSC Work Level Standard and Integrated Leadership Systems for APS Level 6 positions.

Demonstrates Relevant Skills and Expertise

- Demonstrates relevant knowledge, skills, and expertise to maintain and support a geographically distributed electronic observing network. Including proven skills in:
 - hands-on rectification and remote diagnostics of electronic equipment faults,
 - network monitoring,
 - asset management, and,
 - assessing data quality.
- Demonstrated, high-level, strategic view of supporting an electronic observing network.
- Demonstrated willingness to regularly travel and undertake work in a variety of locations.

Supports Strategic Direction

- Supports shared purpose and direction
- Harnesses information and opportunities
- Shows judgement and common sense
- Demonstrated knowledge of the Bureau's Social Justice Strategy

Achieves Results

- Responds positively to change
- Takes responsibility for managing work projects to achieve results
- Applies and builds professional expertise



Supports Productive Working Relationships

- Nurtures internal and external relationships
- Listens to, understands and recognises the needs of others
- Values individual differences and diversity

Displays Personal Drive and Integrity

- Engages with risk and shows personal courage
- Promotes and adopts a positive and balanced approach to work
- Demonstrates self-awareness and a commitment to personal development

Communicates with Influence

- Communicates clearly
- Listens, understands and adapts to audience

Mandatory qualifications:

An associate diploma from an Australian educational institution, or a comparable overseas qualification, which is appropriate to the duties; or relevant experience and training, which enables the employee to competently perform the duties at this level; or other comparable qualifications, which are appropriate to the duties.

A degree or diploma in Electronics from an Australian educational institution, or a comparable overseas qualification will be highly regarded.

Specific Competencies:

Specific qualifications/licences/competencies that are deemed highly desirable to be held or acquired by Technical Officer Level 4 (Surface Networks Lead) applicants include:

- Data Cabling Licence
- Electrical Test and Tag competency
- Remote First Aid
- Off-road, 4WD competencies
- Management / Leadership competencies

MERIT POOL

The selection process will establish a merit pool that may be used to fill similar positions within 12 months.

HOW TO APPLY

Applications can be lodged through [BOMCareers](#).

Your application will consist of resume, contact details for two referees and responses to the selection criteria (maximum of 300 words per criterion) that considers:

- position overview
- job responsibilities
- selection criteria
- relevant sections of the [Integrated Leadership System \(ILS\)](#) and [APS work level standards](#).



The Bureau is an equal opportunities employer. We will support applicants with disability through our [RecruitAbility Program](#) and will provide reasonable adjustments such as access, equipment and other practical support at relevant stages of the recruitment process.

We recognise the need for our workforce to reflect the community we serve and provide an inclusive environment that respects and values diversity and is described in our [Diversity and Inclusion Statement of Commitment](#). We strongly encourage qualified applicants from diverse backgrounds to apply.

The Bureau offers flexible working options, reasonable workplace adjustments and an Employee Assistance Program (EAP). Should you have any questions or experience any difficulties with applying online, please contact the Recruitment Team on BOMCareers@bom.gov.au

COVID-19 RESTRICTIONS

We understand there are unique and evolving challenges due to the current COVID-19 pandemic. The Bureau is responsive and making changes to ensure the safety of all candidates and our team.

Under the relevant legislation and guidance of the National Chief Medical Officer:

- Currently all interviews will be held via audio/video conference (across a range of platforms to accommodate personal requirements) unless otherwise advised.
- The successful candidate may be required to carry out the duties remotely for either a period or until otherwise advised.

ADDITIONAL INFORMATION

To find out more about the employment conditions at the Bureau, please refer to the Bureau of Meteorology [Enterprise Agreement 2018](#).